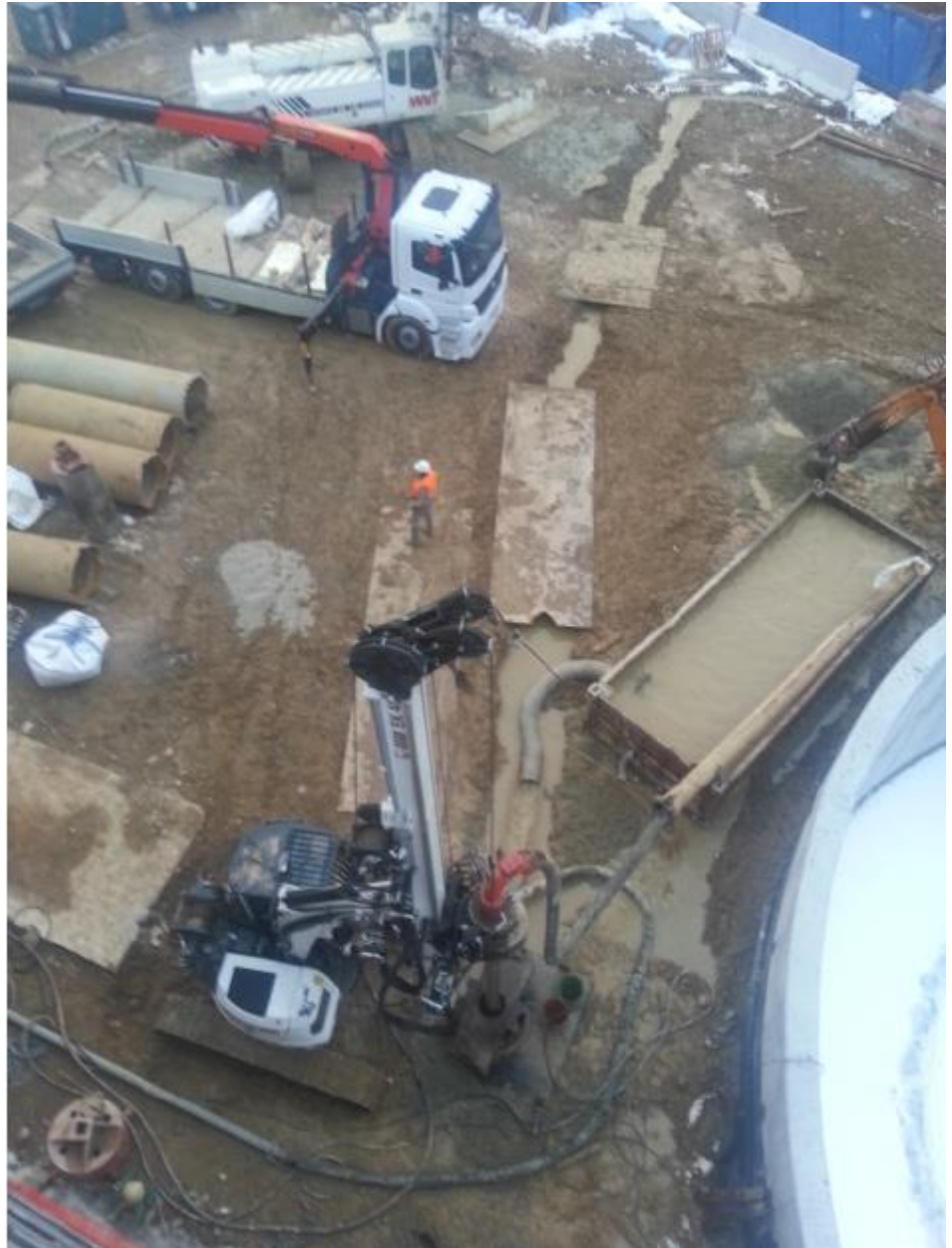




## Reverse Circulation Drilling

This technique is so-called because the drilling mud goes down the annulus between the rods and the wall of the well and then goes up again through the drilling string at high speed. By doing so the cuttings directly go up allowing a better lithostratigraphic analysis of the soils. Analysis that allows the correct development of the well.

The reverse circulation is suitable to perform large diameter wells (up to 1.000 mm and so) at medium depth (up to 400/600 mt) in alluvial soil, it can perform also in compact soils with diameters from 200 mm.



As circulation fluid can be used water or bentonite at low viscosity and density, this can lead some benefits in the final phases of the development of the well, like the draining and the waste disposal.